

PROPOSED CONSTRUCTION FOR:
**THE
 POINTE
 AT EDWARDS**
 PRIVATE RESIDENCE
 (LOT #5)
 EDWARDS, COLORADO 81632

PROJECT TEAM

DEVELOPER
 POINTE DEVELOPMENT, LLC
 TREAT DEVELOPMENT, INC. MANAGER
 EDWARDS, CO
 PHONE: 970.926.1743
 FAX: 970.926.4851

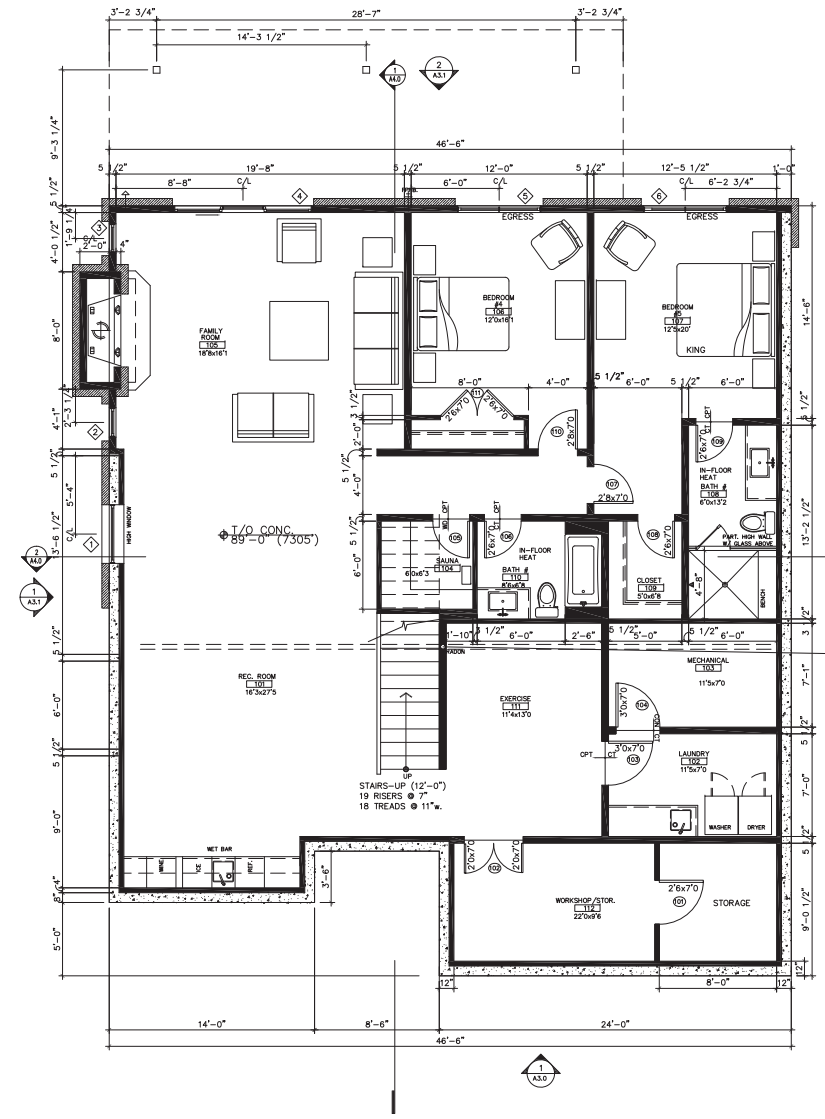
GENERAL CONTRACTOR
 SUMMIT HABITATS, INC.
 PO BOX 1859
 EDWARDS, CO
 PHONE: 970.926.1743
 FAX: 970.926.4851

ARCHITECT
 RON PRESTON ARCHITECT
 PO BOX 1506
 EAGLE, CO 81631
 PHONE: (970) 328-1994

STRUCTURAL ENGINEER
 KRM CONSULTANTS
 P.O. BOX 4572
 VAL, CO 81658
 PHONE: 970.949.9391
 EMAIL: krm@krmconsultants.com

CIVIL ENGINEER
 PEAK LAND CONSULTANTS, INC.
 100 LIONS RIDGE LP
 VAL, CO 81657
 PHONE: 970.476.8644

LANDSCAPE ARCHITECT
 SONEMAC LANDSCAPE ARCH., INC.
 PO BOX 115
 AVON, CO 81620
 PHONE: 970.949.6490
 FAX: 970.962.2162



PROVIDE A RADON SUB-SLAB
 PRESSURIZATION SYSTEM PER
 CODE AF101.1

SUBFLOOR PREPARATION -
 4" MIN. CLEAN AGGREGATE

SOIL-GAS-RETARDER -
 6-MIL POLY. UNDER SLAB

VENT PIPE - 4" DRAIN TILE
 INSTALL PER FIGURE AF102

UNIT 'B' (#4)
 LOWER LEVEL
 05.12.10

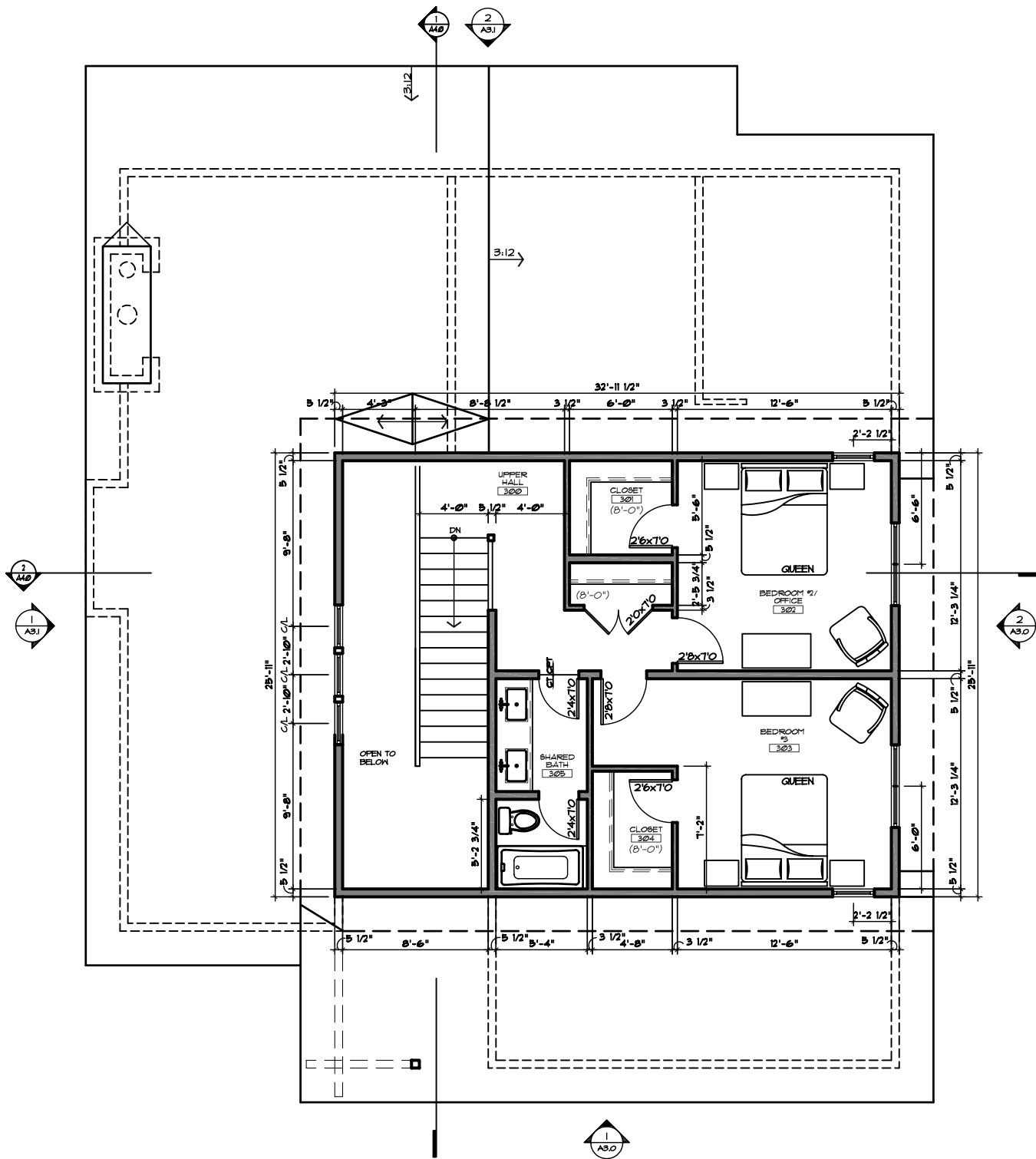
2,289 SF (100% STAIR) LESS
 MECH 90 SF = 2,199 SF

MECHANICAL = 90 SF

1 LOWER LEVEL FLOOR PLAN
 SCALE: 1/4" = 1'-0"

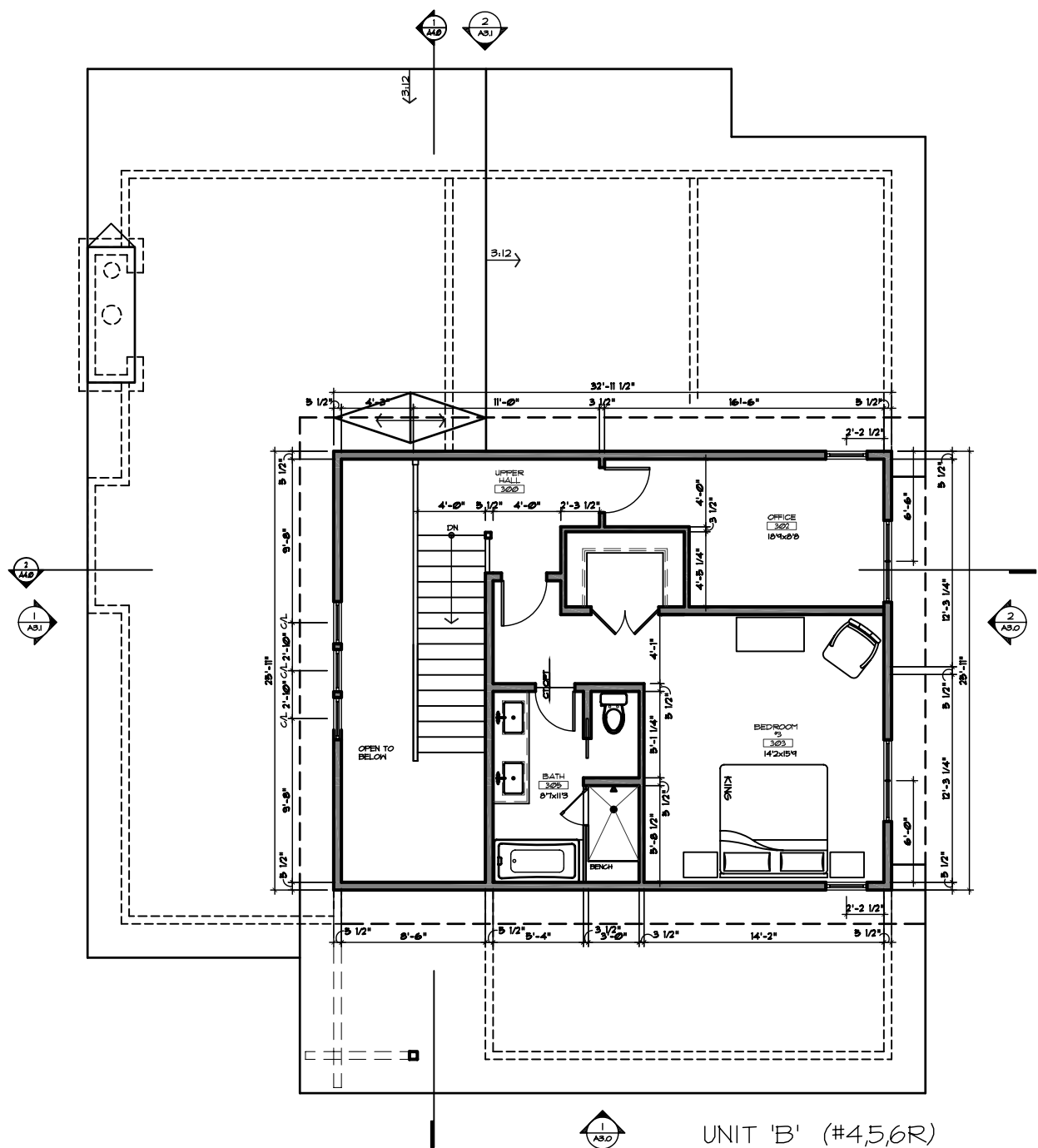
ISSUE	CHECK	DATE
1	PERMIT SET	
2	REVISION	
3	ESTIMATE SET	
4	MEETING SET	
5	REVIEW	
6	NEW	
7	SET	
8	ADDENDUM	

SHEET NUMBER
A2.0



UNIT 'B' (#4,5,6R)
 UPPER LEVEL
 05.12.10

673 SF (1/2 STAIR)



UNIT 'B' (#4,5,6R)
 UPPER LEVEL
 OFFICE OPTION
 05.12.10

673 SF (1/2 STAIR)