



Table of Drawings

GENERAL UTILITY INFORMATION

- A-1.0 COVER SHEET
- A-1.1 GENERAL INFORMATION

SITE PLANS

- A-2.0 SITE PLAN 1" = 10'-0"
- A-2.1 FOUNDATION SITE PLAN 1/8" = 1'-0"
- A-2.2 SITE ELEVATIONS 1/8" = 1'-0"

FLOOR PLANS

- A-3.0 FOUNDATION 1/4" = 1'-0"
- A-3.1 LOWER 1/4" = 1'-0"
- A-3.2 MAIN 1/4" = 1'-0"
- A-3.3 GARAGE 1/4" = 1'-0"
- A-3.4 UPPER LVL GARAGE 1/4" = 1'-0"
- A-3.5 ROOF 1/4" = 1'-0"

ELEVATIONS

- A-4.0 EXTERIOR 1/4" = 1'-0"
- A-4.1 EXTERIOR 1/4" = 1'-0"
- A-4.2 EXTERIOR 1/4" = 1'-0"
- A-4.3 EXTERIOR 1/4" = 1'-0"

SECTIONS

- A-5.0 BUILDING / WALL scale varies
- A-5.1 BUILDING / WALL
- A-5.2 BUILDING / WALL
- A-5.3 BUILDING / WALL
- A-5.4 BUILDING / WALL
- A-5.5 BUILDING / WALL
- A-5.6 BUILDING / WALL
- A-5.7 BUILDING / WALL
- A-5.8 BUILDING / WALL

SCHEDULES

- A-8.0 WINDOW (PRICE EST. ONLY)
- A-8.1 WINDOW (PRICE EST. ONLY)
- A-8.2 INTERIOR DOORS
- A-8.3 EXTERIOR DOORS

ELECTRICAL / FURNITURE PLANS

- EF-1 LOWER LVL 1/4" = 1'-0"
- EF-2 MAIN LVL 1/4" = 1'-0"
- EF-3 GARAGE LVL 1/4" = 1'-0"
- EF-4 UPPER LVL GARAGE 1/4" = 1'-0"

G.R.F.A.

- FA-1 LOWER 1/4" = 1'-0"
- FA-2 MAIN 1/4" = 1'-0"
- FA-3 GARAGE 1/4" = 1'-0"
- FA-4 UPPER LVL GARAGE 1/4" = 1'-0"

ISSUED BY:
 18 SEPT 2003 - PERMIT SET
 04 NOV 2003 - CONSTRUCTION SET #1
 20 JAN 2004 - PROGRESS SET
 23 FEB 2004 - PROGRESS SET
 16 MAR 04 - CONSTRUCTION SET #2 / TANK REVS
 13 MAY 04 - CONSTRUCTION SET #3

MISSION:

BARNES COY ARCHITECTS
 1536 HORTON RD
 POST OFFICE BOX 763
 VAIL, COLORADO, CO
 PHONE: 970.337.2337
 FAX: 970.337.2338

English & Associates, LLC
 12100 ROAD, SUITE 200, VAIL CO 81657



FOREST ROAD RESIDENCE, LOT #21
 Town of Vail, Eagle Co
 VAIL, COLORADO

COVER SHEET

A1.0

8 AUGUST 2002

CONSTRUCTION SET #3

ISSUED: 13 MAY 2004

**FOREST ROAD RESIDENCE
 LOT #21. VAIL, COLORADO
 BARNES COY ARCHITECTS**

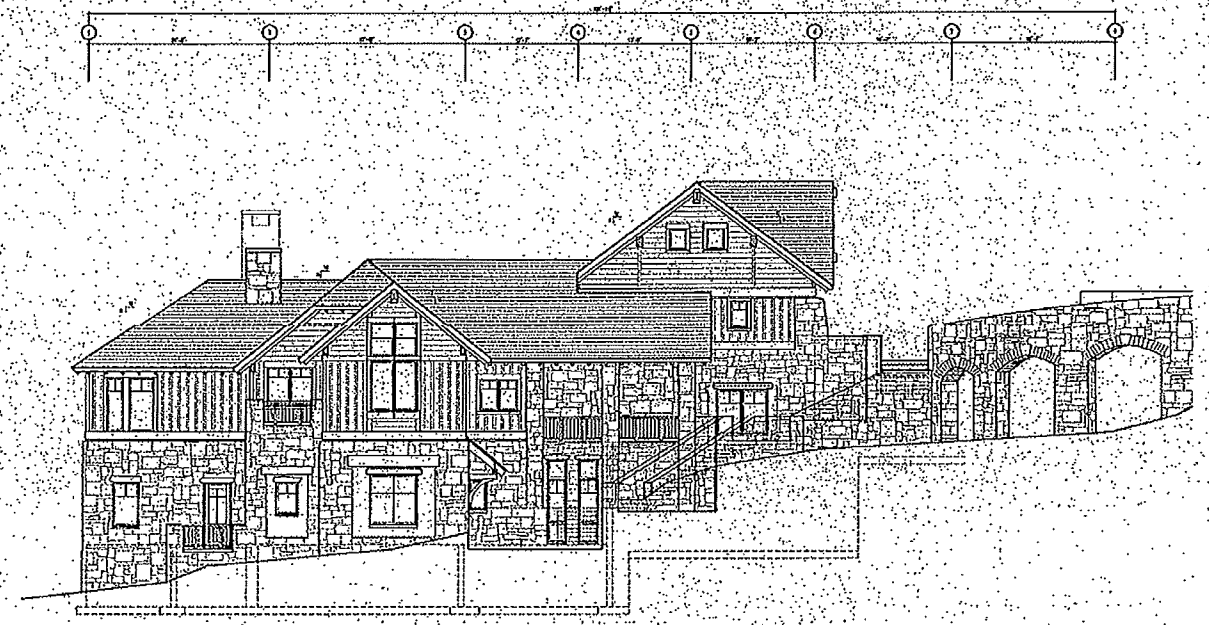
OWNER:
ENGLISH & ASSOCIATES, LLC
 13 VAIL ROAD, SUITE 200
 VAIL, CO 81657
 970.479.7300 (7821 FAX)

ARCHITECT:
BARNES COY ARCHITECTS P.C.
 1536 HORTON RD
 POST OFFICE BOX 763
 VAIL, COLORADO, CO
 970.337.2337 (3436 FAX)

STRUCTURAL DESIGNER:
THE NU MUELLER CO., INC.
 POST OFFICE BOX 2742
 VAIL, CO 81657
 970.479.2637 (2837 FAX)

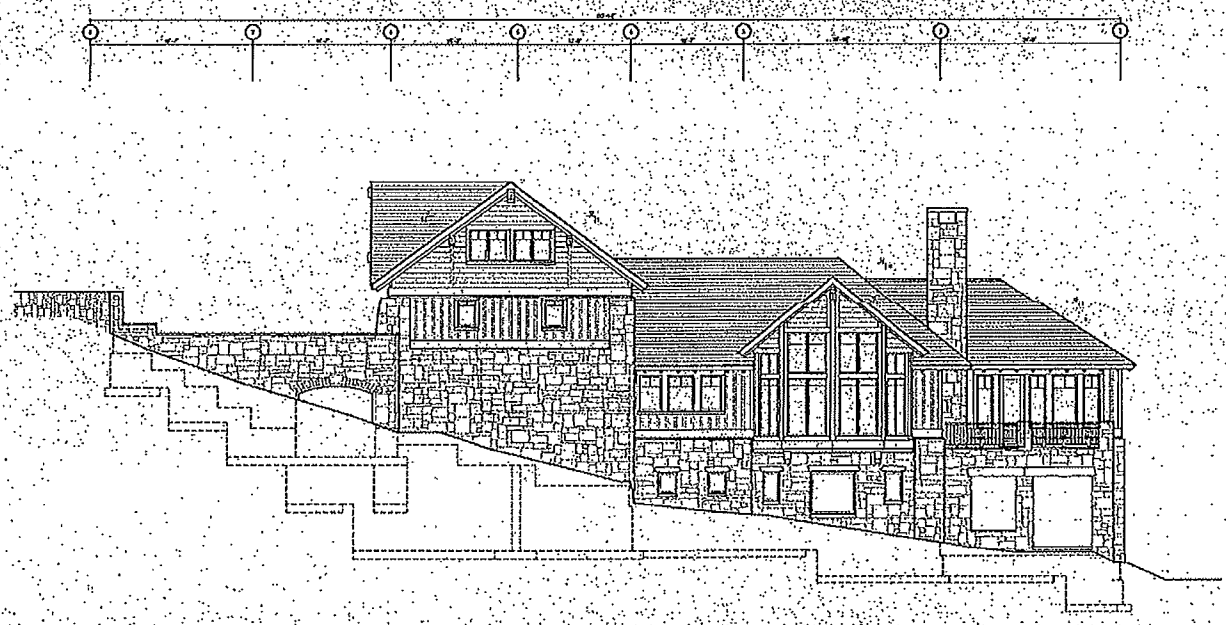
LANDSCAPE COORDINATION:
LANDSCAPES BY RODY WASSLE
 POST OFFICE BOX 3740
 VAIL, CO 81657
 970.519.6100 (6937 FAX)

- 11,852' - 11852.00'
- 11,854' - 11854.00'
- 11,856' - 11856.00'
- 11,858' - 11858.00'
- 11,860' - 11860.00'
- 11,862' - 11862.00'
- 11,864' - 11864.00'
- 11,866' - 11866.00'
- 11,868' - 11868.00'
- 11,870' - 11870.00'
- 11,872' - 11872.00'
- 11,874' - 11874.00'
- 11,876' - 11876.00'
- 11,878' - 11878.00'
- 11,880' - 11880.00'
- 11,882' - 11882.00'
- 11,884' - 11884.00'
- 11,886' - 11886.00'
- 11,888' - 11888.00'
- 11,890' - 11890.00'
- 11,892' - 11892.00'
- 11,894' - 11894.00'
- 11,896' - 11896.00'
- 11,898' - 11898.00'
- 11,900' - 11900.00'
- 11,902' - 11902.00'
- 11,904' - 11904.00'
- 11,906' - 11906.00'
- 11,908' - 11908.00'
- 11,910' - 11910.00'
- 11,912' - 11912.00'
- 11,914' - 11914.00'
- 11,916' - 11916.00'
- 11,918' - 11918.00'
- 11,920' - 11920.00'
- 11,922' - 11922.00'
- 11,924' - 11924.00'
- 11,926' - 11926.00'
- 11,928' - 11928.00'
- 11,930' - 11930.00'
- 11,932' - 11932.00'
- 11,934' - 11934.00'
- 11,936' - 11936.00'
- 11,938' - 11938.00'
- 11,940' - 11940.00'
- 11,942' - 11942.00'
- 11,944' - 11944.00'
- 11,946' - 11946.00'
- 11,948' - 11948.00'
- 11,950' - 11950.00'
- 11,952' - 11952.00'
- 11,954' - 11954.00'
- 11,956' - 11956.00'
- 11,958' - 11958.00'
- 11,960' - 11960.00'
- 11,962' - 11962.00'
- 11,964' - 11964.00'
- 11,966' - 11966.00'
- 11,968' - 11968.00'
- 11,970' - 11970.00'
- 11,972' - 11972.00'
- 11,974' - 11974.00'
- 11,976' - 11976.00'
- 11,978' - 11978.00'
- 11,980' - 11980.00'
- 11,982' - 11982.00'
- 11,984' - 11984.00'
- 11,986' - 11986.00'
- 11,988' - 11988.00'
- 11,990' - 11990.00'
- 11,992' - 11992.00'
- 11,994' - 11994.00'
- 11,996' - 11996.00'
- 11,998' - 11998.00'
- 11,999' - 11999.00'



① WEST SITE ELEVATION
SCALE: 1/8" = 1'-0"

- 11,852' - 11852.00'
- 11,854' - 11854.00'
- 11,856' - 11856.00'
- 11,858' - 11858.00'
- 11,860' - 11860.00'
- 11,862' - 11862.00'
- 11,864' - 11864.00'
- 11,866' - 11866.00'
- 11,868' - 11868.00'
- 11,870' - 11870.00'
- 11,872' - 11872.00'
- 11,874' - 11874.00'
- 11,876' - 11876.00'
- 11,878' - 11878.00'
- 11,880' - 11880.00'
- 11,882' - 11882.00'
- 11,884' - 11884.00'
- 11,886' - 11886.00'
- 11,888' - 11888.00'
- 11,890' - 11890.00'
- 11,892' - 11892.00'
- 11,894' - 11894.00'
- 11,896' - 11896.00'
- 11,898' - 11898.00'
- 11,900' - 11900.00'
- 11,902' - 11902.00'
- 11,904' - 11904.00'
- 11,906' - 11906.00'
- 11,908' - 11908.00'
- 11,910' - 11910.00'
- 11,912' - 11912.00'
- 11,914' - 11914.00'
- 11,916' - 11916.00'
- 11,918' - 11918.00'
- 11,920' - 11920.00'
- 11,922' - 11922.00'
- 11,924' - 11924.00'
- 11,926' - 11926.00'
- 11,928' - 11928.00'
- 11,930' - 11930.00'
- 11,932' - 11932.00'
- 11,934' - 11934.00'
- 11,936' - 11936.00'
- 11,938' - 11938.00'
- 11,940' - 11940.00'
- 11,942' - 11942.00'
- 11,944' - 11944.00'
- 11,946' - 11946.00'
- 11,948' - 11948.00'
- 11,950' - 11950.00'
- 11,952' - 11952.00'
- 11,954' - 11954.00'
- 11,956' - 11956.00'
- 11,958' - 11958.00'
- 11,960' - 11960.00'
- 11,962' - 11962.00'
- 11,964' - 11964.00'
- 11,966' - 11966.00'
- 11,968' - 11968.00'
- 11,970' - 11970.00'
- 11,972' - 11972.00'
- 11,974' - 11974.00'
- 11,976' - 11976.00'
- 11,978' - 11978.00'
- 11,980' - 11980.00'
- 11,982' - 11982.00'
- 11,984' - 11984.00'
- 11,986' - 11986.00'
- 11,988' - 11988.00'
- 11,990' - 11990.00'
- 11,992' - 11992.00'
- 11,994' - 11994.00'
- 11,996' - 11996.00'
- 11,998' - 11998.00'
- 11,999' - 11999.00'



① EAST SITE ELEVATION
SCALE: 1/8" = 1'-0"

GENERAL NOTE:
SHEET A2.2 OVERALL SITE ELEVATIONS
FOR REFERENCE PURPOSES ONLY.
REFER TO A4 SHEETS FOR ALL ELEVATION
INFORMATION.

REGISTERED JUL 2 8 2004

CREATED BY:
REVISIONS:
10 SEPT 2003 - PERMIT SET
04 NOV 2003 - CONSTRUCTION SET #1
20 JAN 2004 - PROGRESS SET
23 FEB 2004 - PROGRESS SET
18 MAR 04 - CONSTRUCT #2 / Y.D.S. REVS.
13 MAY 04 - CONSTRUCTION SET #2

PLANNED BY:

**BARNES COY
ARCHITECTS**

1136 HOUSTON HIGHWAY
POST OFFICE BOX 763
SOUTH PLATON, CO
PHONE: 303.537.5355
FAX: 303.537.6858

English & Associates, LLC
11144 Road 244 700, Vail CO 81657



**FOREST ROAD
RESIDENCE, LOT #21**
Town of Vail, Eagle Co.
VALE, COLORADO

SITE ELEVATIONS:

A2.2

26 NOVEMBER 2007