



VAg, Inc.
Architects & Planners

Post Office Box 1734
Vail CO 81658.1734
(970) 949.7034
fax: (970) 949.8154
email: general@vagarchitects.com

90 Benchmark Road Suite 202
Avon, CO 81620

Development:

Project Management:

Misc. Consultant:

Seal

Filing 11, Lot 9
Arrowhead
Eagle County, Colorado

Revisions:



Issue Dates:
"A" 05.06.05

Sheet Title:

**SURFACE
MATERIAL
CALCS**

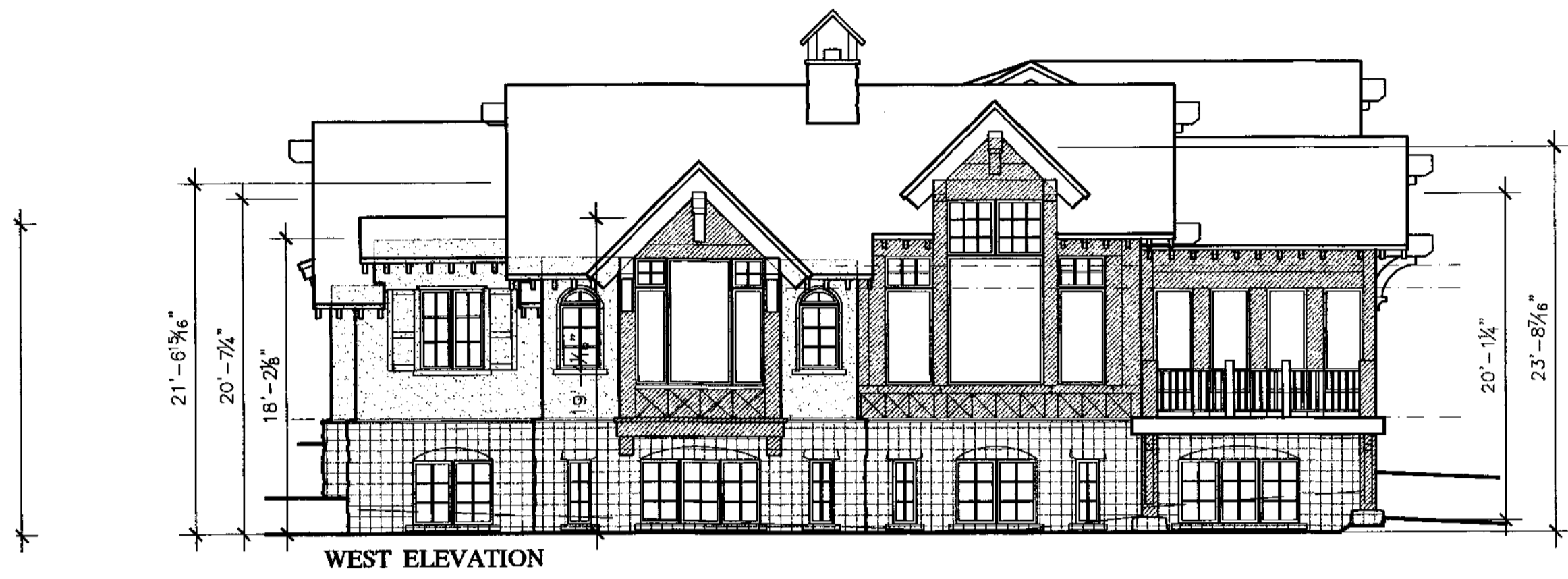
Project No:

2504.00

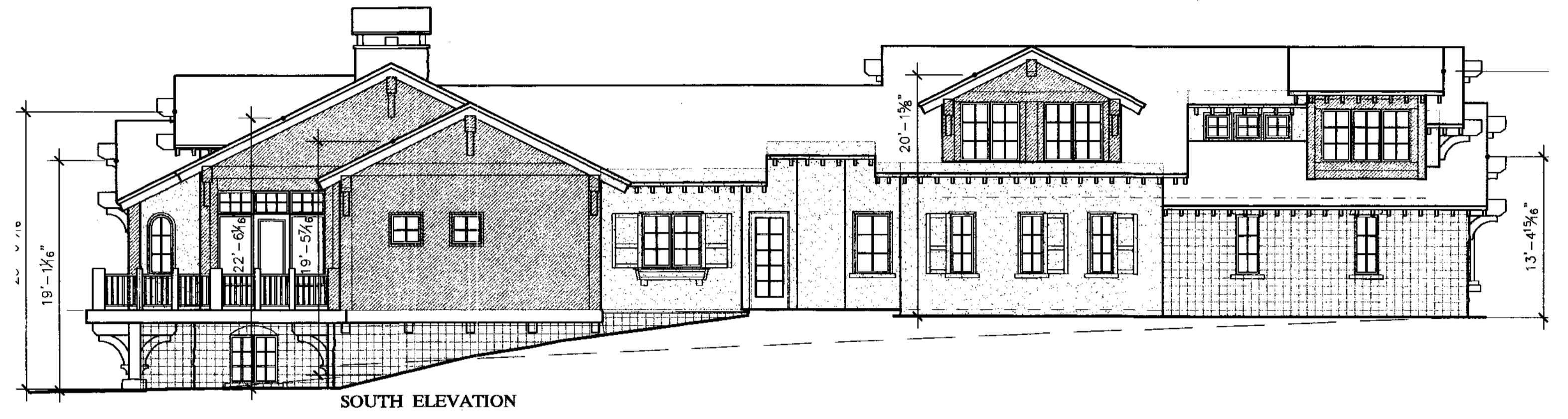
Sheet No:

1

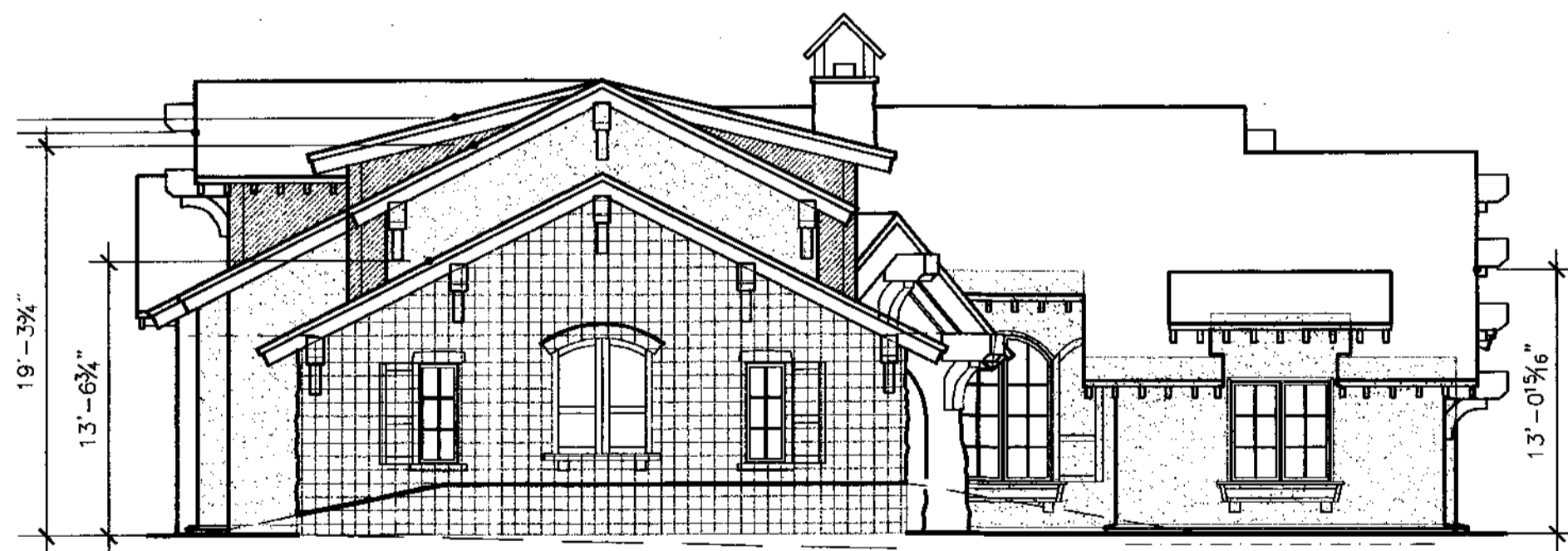
© 2005 VAg, Inc. architects & planners



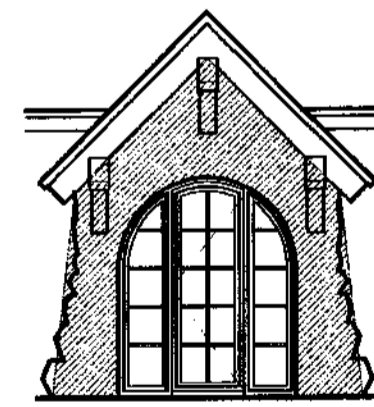
WEST ELEVATION



SOUTH ELEVATION



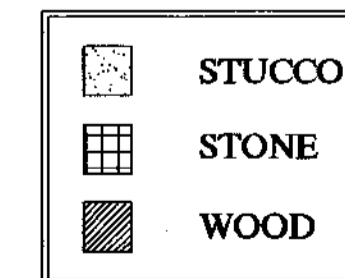
EAST ELEVATION



ENTRY



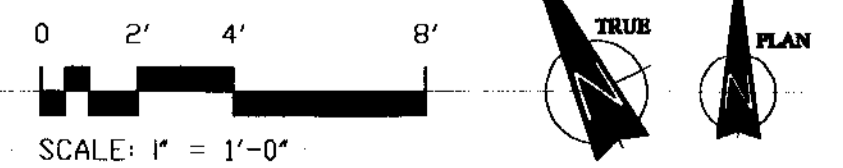
NORTH ELEVATION



MATERIAL CALCULATIONS	
TOTAL AREA	= 4084 sq. ft.
STUCCO	= 1971 sq. ft.
STONE	= 1268 sq. ft.
WOOD	= 845 sq. ft.
% STUCCO	= 49%
% STONE	= 31%
% WOOD	= 21%

AVERAGE BUILDING HEIGHT CALCULATIONS	
NORTH ELEVATION	= 16.75 ft.
SOUTH ELEVATION	= 19.83 ft.
EAST ELEVATION	= 17.32 ft.
WEST ELEVATION	= 20.58 ft.

1 SURFACE MATERIALS CALCULATIONS
1/8" = 1'-0"



P:\2504 Lauterbach Residence\01 Drawings\LB_A_ext.dwg, 5/6/2005 12:00:52 PM, JH