

PRELIMINARY
NOT FOR CONSTRUCTION

Pierce,
Seegerberg &
Associates
Architects
P.C.A.I.A.
ARCHITECTURE
PLANNING
INTERIOR

Plan Office
1000 N. Franklin Road
Suite 100
Denver, Colorado 80202
Tel: 303.733.1100

Client: Pine Cone Lodge
1111 Pine Cone Lodge
Arrowhead Village
Arrowhead, CO 80004

PINE CONE LODGE
ARROWHEAD VILLAGE
COLORADO

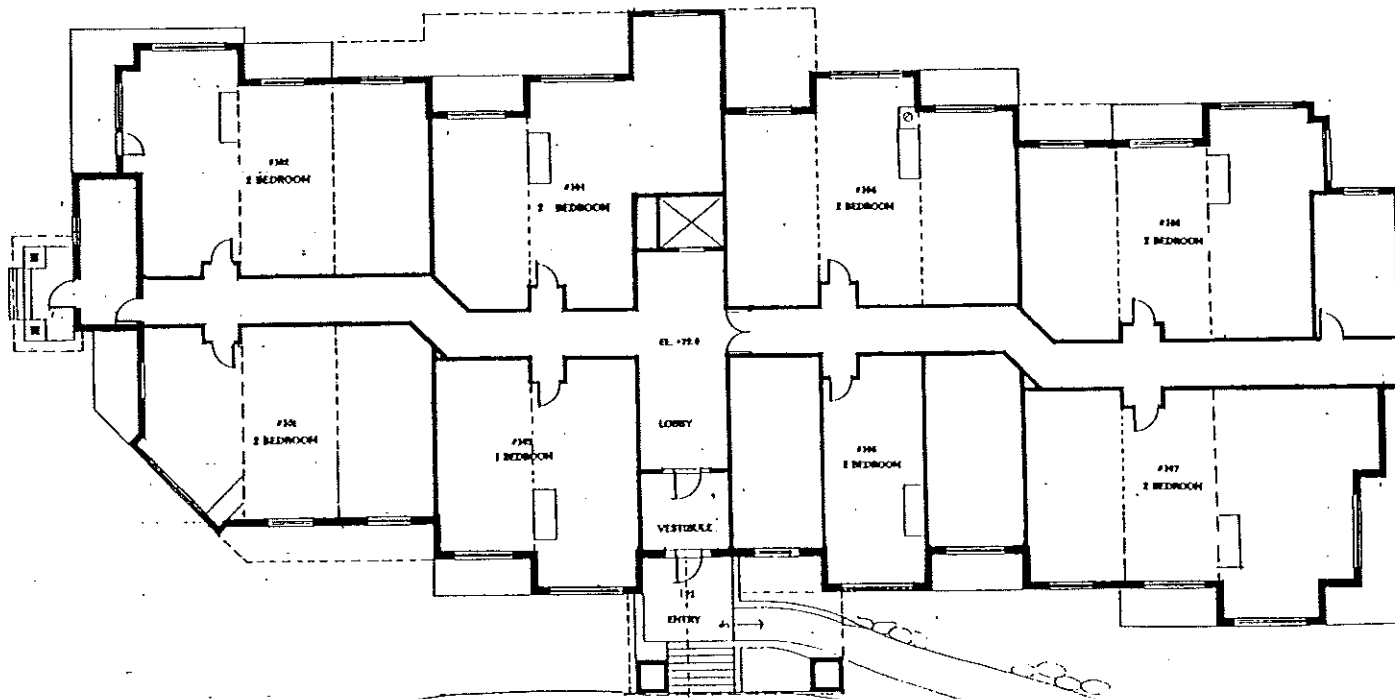
Revisions:
SCHEMATIC DESIGN
REVIEW 3-9-98
SCHEMATIC DESIGN
REVIEW-RITE 3-18-98
DISC BOARD CHG
REVIEW-SITE 3-9-98

Date:	1-31-98
Project No:	21055.00
Drawn by:	RJJ
Checked by:	SPJ

SITE PLAN
DRAWN BY ROBERT LAMB HART WITH NEW BLDG. BY P.S.A.

0 20 40 80 Feet

PRELIMINARY
NOT FOR CONSTRUCTION



FIRST FLOOR PLAN
SCALE: 1/8" = 1'-0"

Pierce,
Seegerberg &
Associates,
Architects
P.C.-A.I.A.

ARCHITECTURE
PLANNING
INTERIORS

Main Office
1900 East Foothill Parkway
1100 Colorado Drive
Boulder, CO 80501

Denver Office
1111 East Colfax - Suite 312
1200 14th St.
Denver, Colorado 80202
303.433.1111

PINE CONE LODGE
ARROWHEAD VILLAGE, CO

REVISION
SCHEMATIC DESIGN
SUBMITTAL
REV. K.L.H. COMMENTS
1-15-99
SCHEMATIC DESIGN
REVIEW
1-21-99
1-23-99
1-27-99
2-5-99
D.R.C. 3-5-99
S.D. SITE
REVIEW

Date 02 03 97

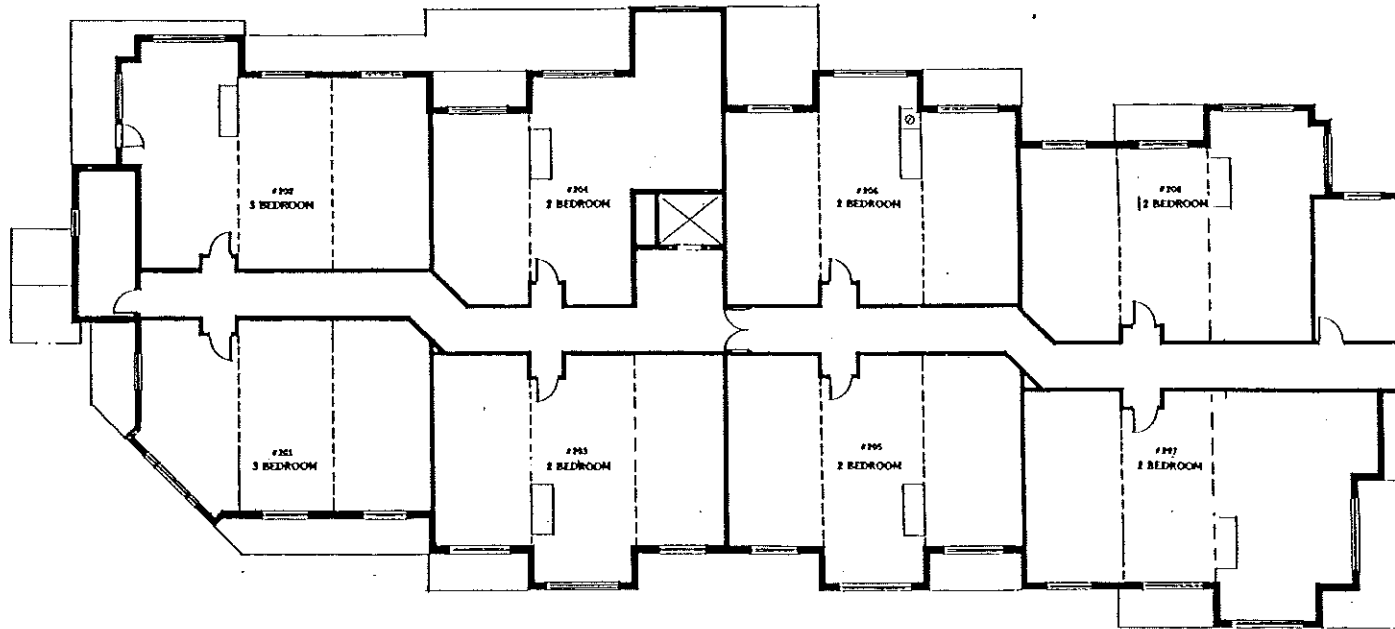
Project no. 21050 00

Drawn by T.S.D.

Checked by S.H.

Drawn of
3 11

PRELIMINARY
NOT FOR CONSTRUCTION



SECOND FLOOR PLAN
SCALE: 1/8"=1'-0"

Pierce,
Seegerberg &
Associates,
Architects
P.C.-A.S.A.

ARCHITECTURE
INTERIORS

Main Office
1900 South Young Road West
Salt Lake City, UT 84119
313.476.6113

Denver Office
13400 Grant - Suite 311
Denver, CO 80231
303.423.3113

PINE CONE LODGE
ARROWHEAD VILLAGE, CO

Revisions:
SCHEMATIC DESIGN
SUMMITAL
REV R.L.H. COMMENTS
1-14-99
SCHEMATIC DESIGN
REVIEW 1-21-99
1-23-99
1-27-99
2-5-99
D.R.C. 3-5-99
S.D. SITE
REVIEW

Date 12 29 97

Project no. 21059.00

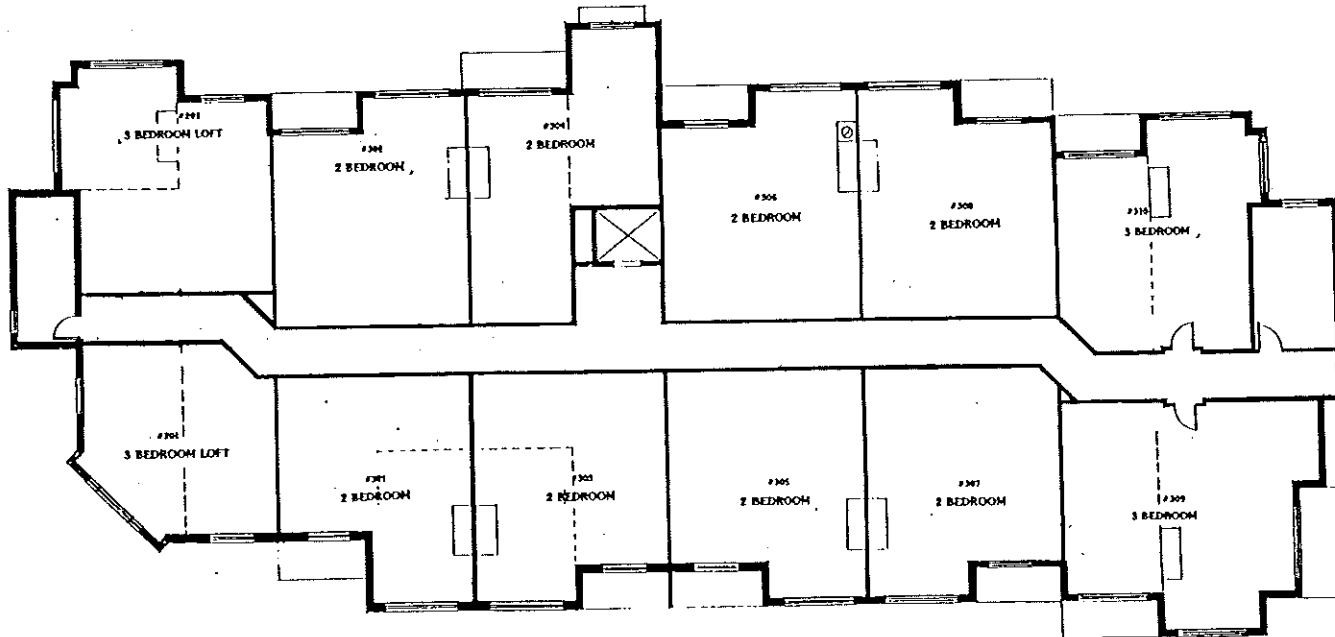
Drawn by

Checked by SMH

Sheet 11

4 11

PRELIMINARY
NOT FOR CONSTRUCTION



THIRD FLOOR PLAN
 SCALE: 1/8" = 1'-0"

Pierce,
 Segerberg &
 Associates,
 Architects
 P.C.-A.I.A.

ARCHITECTURE
 PLANNING
 INTERIORS

Main Office
 1800 South Irving Road West
 Fort Collins, CO 80521
 973-4411

Denver Office
 1730 East Colfax - Suite 315
 Denver, CO 80202
 733-3333

PINE CONE LODGE
 ARROWHEAD VILLAGE, CO

Performs:
 SCHEMATIC DESIGN
 SUBMITTAL
 REV. & I.T. COMMENTS
 1-14-99
 SCHEMATIC DESIGN
 REVIEW
 1-21-99
 1-23-99
 1-27-99
 2-5-99
 D.R.C.
 S.D. SITE
 REVIEW
 3-5-99

Date 12 23 97

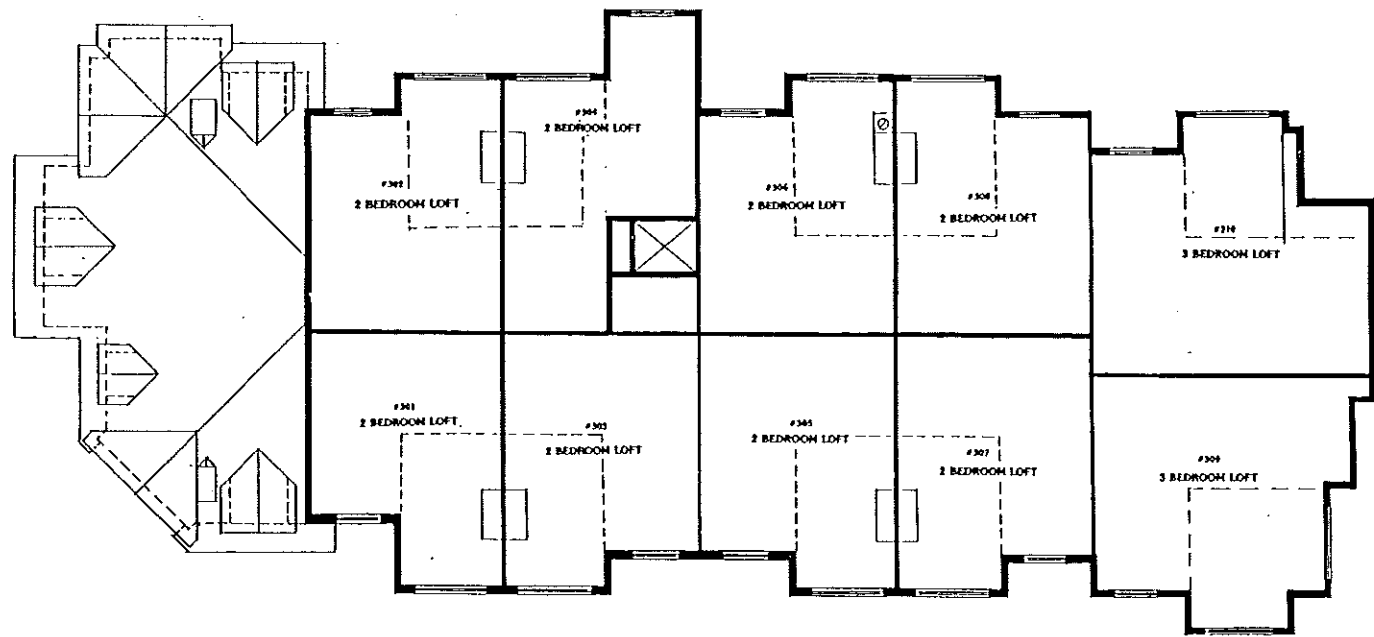
Project no 21000 00

Drawn by S.W.D.

Checked by S.W.D.

Sheet 08

PRELIMINARY
 NOT FOR CONSTRUCTION



LOFT LEVEL PLAN
 SCALE: 1/8" = 1'-0"

Pierce,
 Segerberg &
 Associates,
 Architects
 P.C. - A.I.A.

ARCHITECTURE
 PLANNING
 INTERIORS

Main Office
 1000 South Fremont Street West
 Salt Lake City, UT 84111
 801-467-6111

Denver Office
 3150 East Colfax - Suite 511
 Denver, Colorado 80211
 303-733-7333

PINE CONE LODGE
 ARROWHEAD VILLAGE, CO

Revisions
 SCHEMATIC DESIGN
 SUBMITTAL
 REV R L H. COMMENTS
 1-14-99
 SCHEMATIC DESIGN
 REVIEW 1-21-99
 1-23-99
 1-27-99
 2-5-99
 D.R.C.
 S.D. SITE
 REVIEW 3-5-99

Date 12-23-97
 Project no. 11079-00
 Drawn by [signature]
 Checked by [signature]
 Date of 6 11