

### Site Features

- Gated community
- Prime Arrowhead Village™ location with a short walk to ski lifts, tennis courts, golf course, community pool & spa, Alpine Club (proposed), fine restaurants
- Overall village plan includes extensive, integrated landscaping
- Underground utilities

### Building Features

- Heated underground parking with restricted access
- Individual owner storage closets in garage
- Owner ski locker room
- Gypcrete topping over plywood on floor structure with gypsum ceiling for fire rating. Insulation in floor/ceiling assembly for sound protection.
- Sound insulated party walls
- Natural stone, cedar siding, timber accents, stucco exterior (exterior finish & insulation system)
- Double glazed, clad wood windows
- Exterior Walls with R-19 insulation
- Gas-fired domestic (common) hot water
- Gas-fired hydronic in-floor heat throughout (except common areas)

### Unit Features

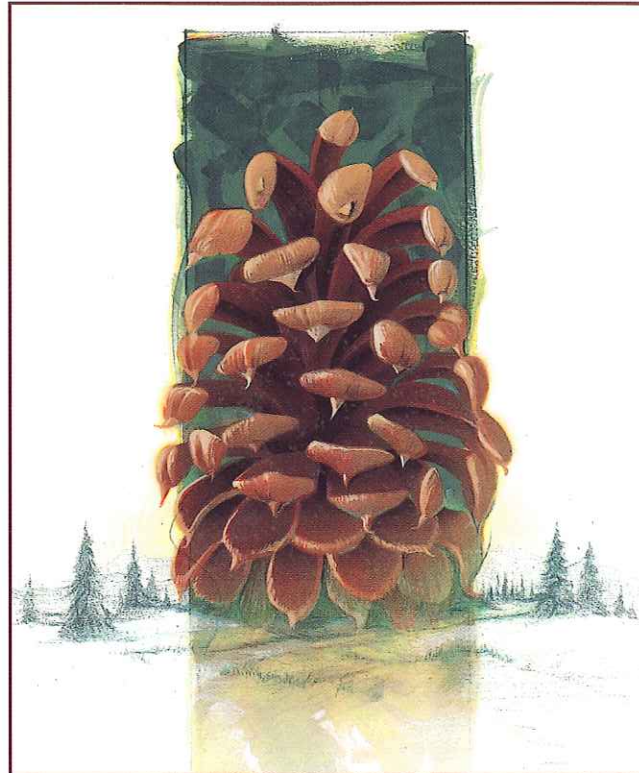
- Paneled pine wood doors and trim
- Private decks for most units
- Cable TV in living room and all bedrooms
- Wire capacity for up to 4 phone lines per unit
- Lock-up closet in most units
- Carpets standard
- Living rooms, master bedrooms and loft areas wired for ceiling fans

### Kitchen

- Select pine wood cabinetry with raised panel, overlay doors, concealed hinges
- Large breakfast bar in most units
- Ceramic tile counter tops with wood edge
- Cast iron sink, single control, retractable faucet
- Ceramic tile floor

# PINECONE LODGE

## Special Features



### Appliances

- White-on-white appliances
- No-frost refrigerator/freezer with ice maker
- Slide-in "clean-top" electric range
- Five cycle dishwasher
- Spacesaver microwave over range (incorporates range hood and light)
- Full size stack washer / dryer
- In-sink waste disposal

### Living Room

- Vaulted ceilings in most top floor units
- Higher ceilings in living area and bedrooms of lower units
- Expansive simulated divided-light clad wood windows
- Gas fireplace with "burning embers," glass enclosure

### Bedrooms

- Balcony access from master bedrooms in most units
- Private baths in most master bedrooms
- Loft level bedrooms have dormer windows and vaulted ceilings

### Baths

- All white plumbing fixtures - Kohler or equivalent
- Double lavs in most master baths
- Ceramic tile floors standard
- Over-sized soaking tub with tile deck and backsplash in most master baths
- Ceramic tile vanity tops with wood edge
- Full-width mirrors from backsplash to ceiling
- Showers and shower/tubs have floor to ceiling ceramic tile
- Glass shower enclosures
- Designer accents in all baths

*Depending on time of order selected upgrades may be available.*

*June 15, 1998.*

*Developer reserves the right to substitute items of equal or higher quality. Brand names are used to set a quality standard only.*



# PINECONE LODGE

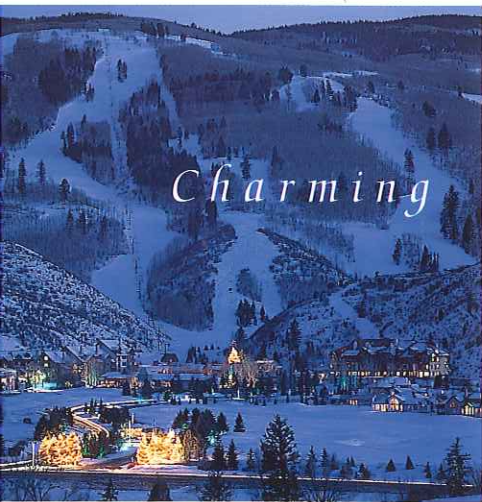
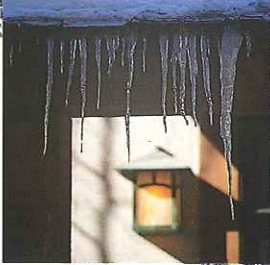
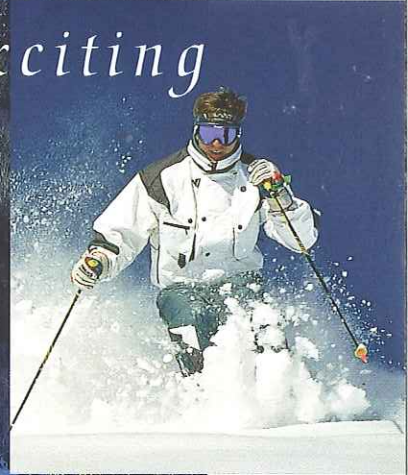
*In Arrowhead™ Village*



*Ski-in*



*Exciting*



*Charming*

## *Affordable*

Imagine a home nestled in a charming pedestrian village, surrounded by whispering pines and colorful aspens. A mountain retreat reminiscent of Scandinavian lodges with a rustic Colorado flair. Distinctively elegant with well-appointed interior designs and warm decor. Pinecone Lodge is that home...with everything you can imagine and more.

Located in the prestigious Arrowhead community, these exceptional 1, 2 and 3 bedroom residences are being developed by the owner of St. James Place, Aspenwood Lodge and Arapahoe Basin ski area. A few steps on the beautiful landscaped walking paths take you to the spectacular new community pool and spa, proposed Arrowhead Alpine Club™ and the Arrow Bahn™ Express chairlift providing access to all Village-to-Village™ ski terrain connecting the villages of Beaver Creek® Mountain – Bachelor Gulch,™ Beaver Creek and Arrowhead.

Demand is high and there will only be 26 residences. Call Slifer, Smith and Frampton/Vail Associates Real Estate at 800-535-8882 or 970-926-3000 today for more information about Pinecone Lodge at Arrowhead Village. A mountain home to call your own!

**PINECONE LODGE MAY BE YOUR LAST OPPORTUNITY TO PURCHASE A NEW SKI-IN RESIDENCE IN THE VAIL VALLEY AT THESE PRICES!**

*Two Bedrooms starting in the low \$400's.*

