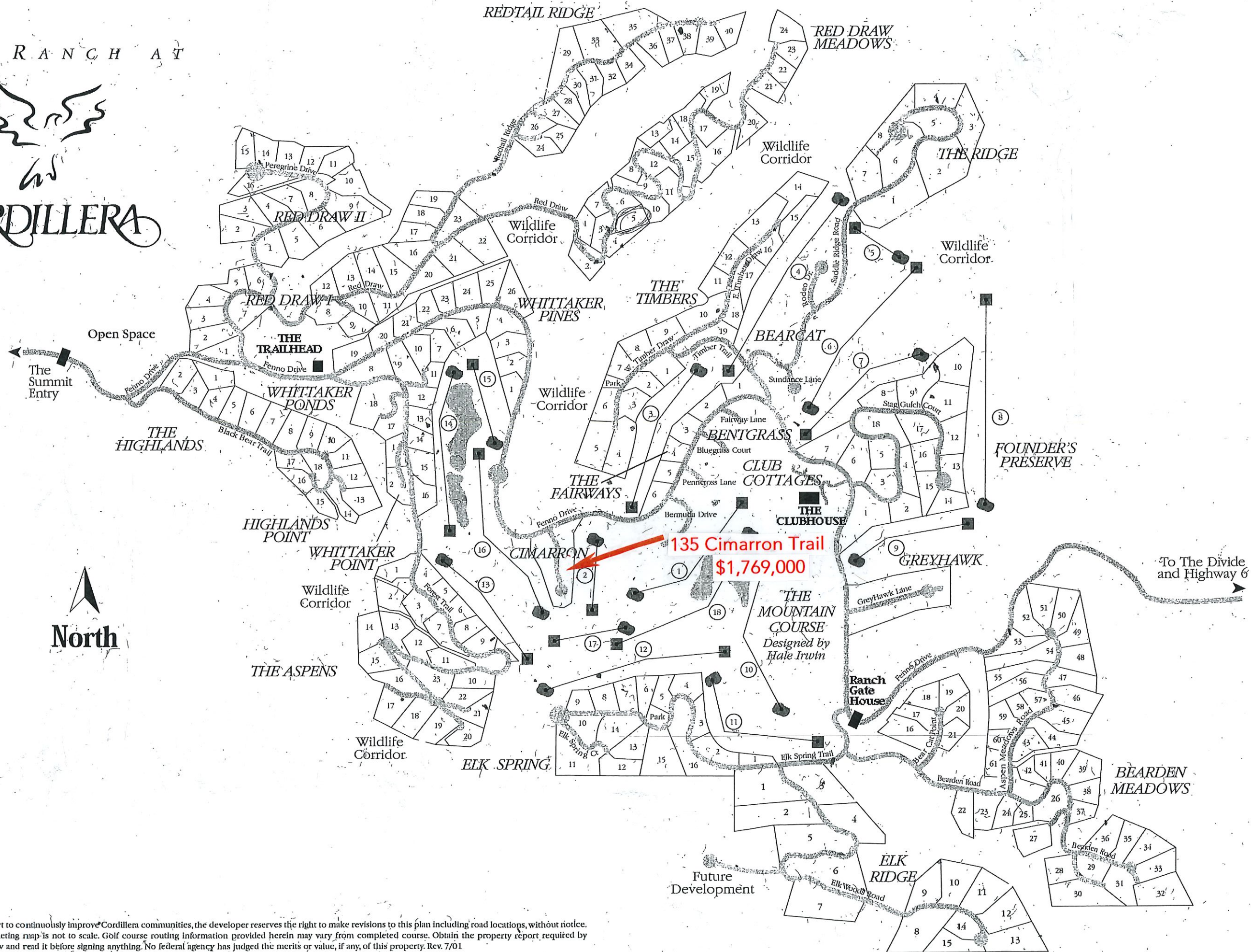


THE RANCH AT



The Ranch



135 Cimarron Trail
\$1,769,000

In an effort to continuously improve Cordillera communities, the developer reserves the right to make revisions to this plan including road locations, without notice. This marketing map is not to scale. Golf course routing information provided herein may vary from completed course. Obtain the property report required by federal law and read it before signing anything. No federal agency has judged the merits or value, if any, of this property. Rev. 7/01

