

# BEAVER CREEK®

## Resort Map

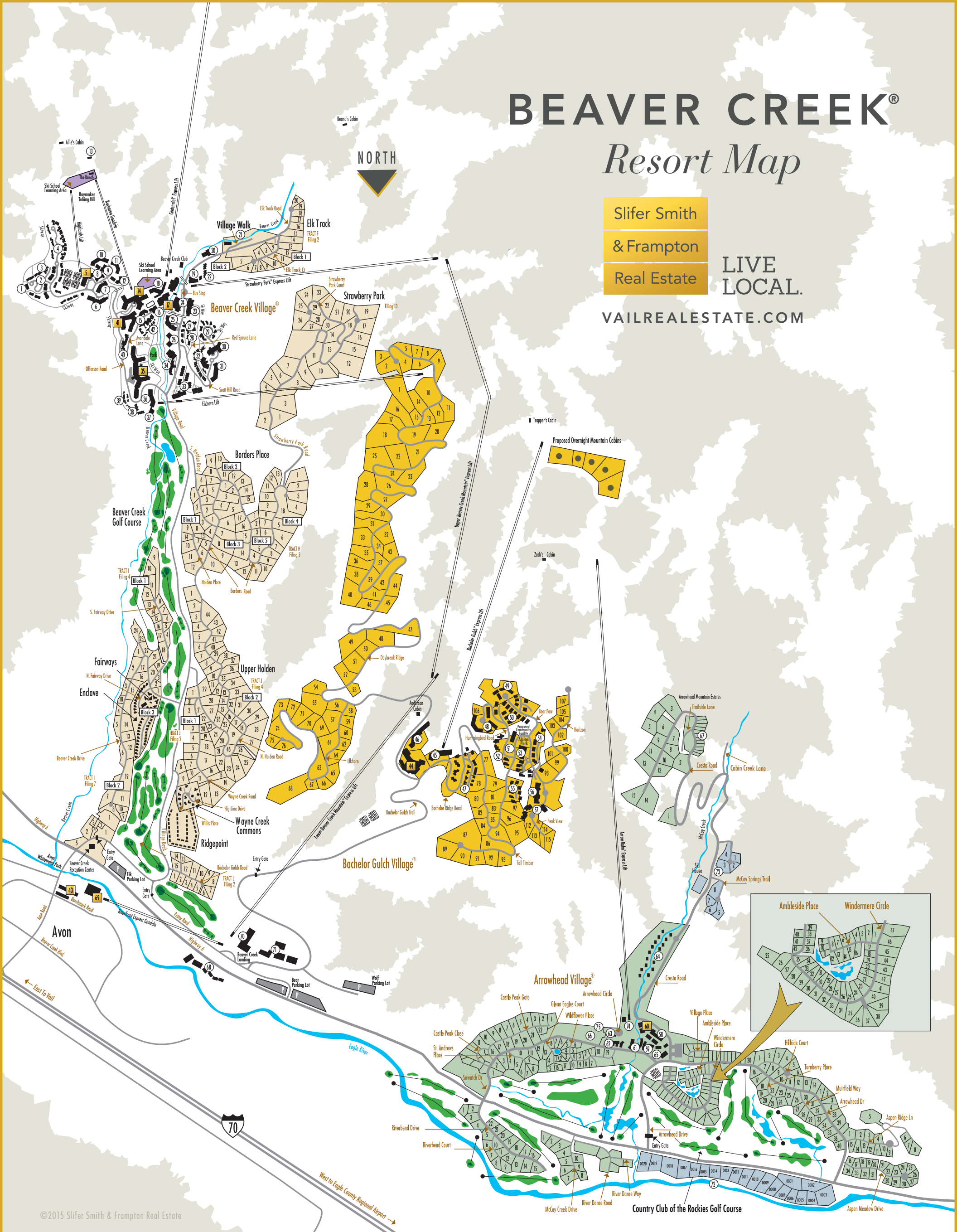
Slifer Smith

& Frampton

Real Estate

LIVE LOCAL.

VAILREALESTATE.COM



### LEGEND

- Beaver Creek Village
- Bachelor Gulch Village
- Arrowhead Village
- Slifer Smith & Frampton Offices
- Parking Lots

1. Saddleridge
2. The Meadows
3. Haymeadow Residences
4. Greystone
5. The Highlands Lodge
6. Kiva
7. The Highlands Westview
8. Stonegate
9. Highlands Townhomes
10. The Highlands Slopeside
11. McCoy Park
12. Wiltshire Court
13. Riding Stables
14. Park Hyatt
15. Poste Montane
16. Market Square & Vilar Center for the Arts
17. Park Plaza - Vacation Ownership

18. Gerald R. Ford Hall
19. The Osprey at Beaver Creek
20. Chapel
21. Village Walk
22. Elk Track Townhomes
23. Strawberry Park
24. Beaver Creek Lodge
25. Oxford Court
26. Townsend Place
27. Pinehurst
28. Larkspur Villas
29. The Chateau Chalets
30. The Chateau
31. Chateau Terrace
32. Pines Lodge and Townhomes
33. Borders Lodges and Royal Elk Townhomes
34. Creekside

35. The Charter
36. Elkhorn Lodge
37. Golf Course Clubhouse
38. Ironwood
39. Aspens
40. Centennial
41. St. James Place
42. The Villas at Beaver Creek, Villa Montane, Hyatt Mountain Lodge
43. SSF Corporate Offices
44. The Ritz-Carlton® Bachelor Gulch
45. The Ritz-Carlton® Club
46. Snow Cloud Lodge
47. Buckhorn
48. Hummingbird Lodge
49. Bear Paw Lodge
50. Deer Trail

51. Firelight Lodge
52. Snowberry
53. Settlers Lodge
54. Quartermoon
55. Skywatch
56. Horizon Pass Residences
57. Horizon Pass Townhomes
58. Aspenwood Lodge
59. Village Townhomes
60. Arrowhead Alpine Club
61. Spruce Tree Lodge
62. Village Townhomes
63. Buffalo Park
64. Cresta
65. Pinecone Lodge
66. Dakotas
67. Trailside

68. Brookside
69. The Westin Riverfront Resort & Spa
70. Beaver Creek Landing
71. The Tarnes Buildings
72. Arrowhead River Ranch
73. McCoy Springs at Arrowhead
74. One Arrowhead Place
75. Mountain Retreat

Not all areas shown are completed or under construction and there is no assurance that such areas will be completed as shown, if at all. Map is not to scale.

Obtain the Property Report required by law and read it before signing anything. No Federal agency has judged the merits or value, if any, of this property. The plans and information presented here are preliminary and are subject to change and refinement by the developer without notice from time to time within zoning and density guidelines approved by Eagle County. Revised 3/15.