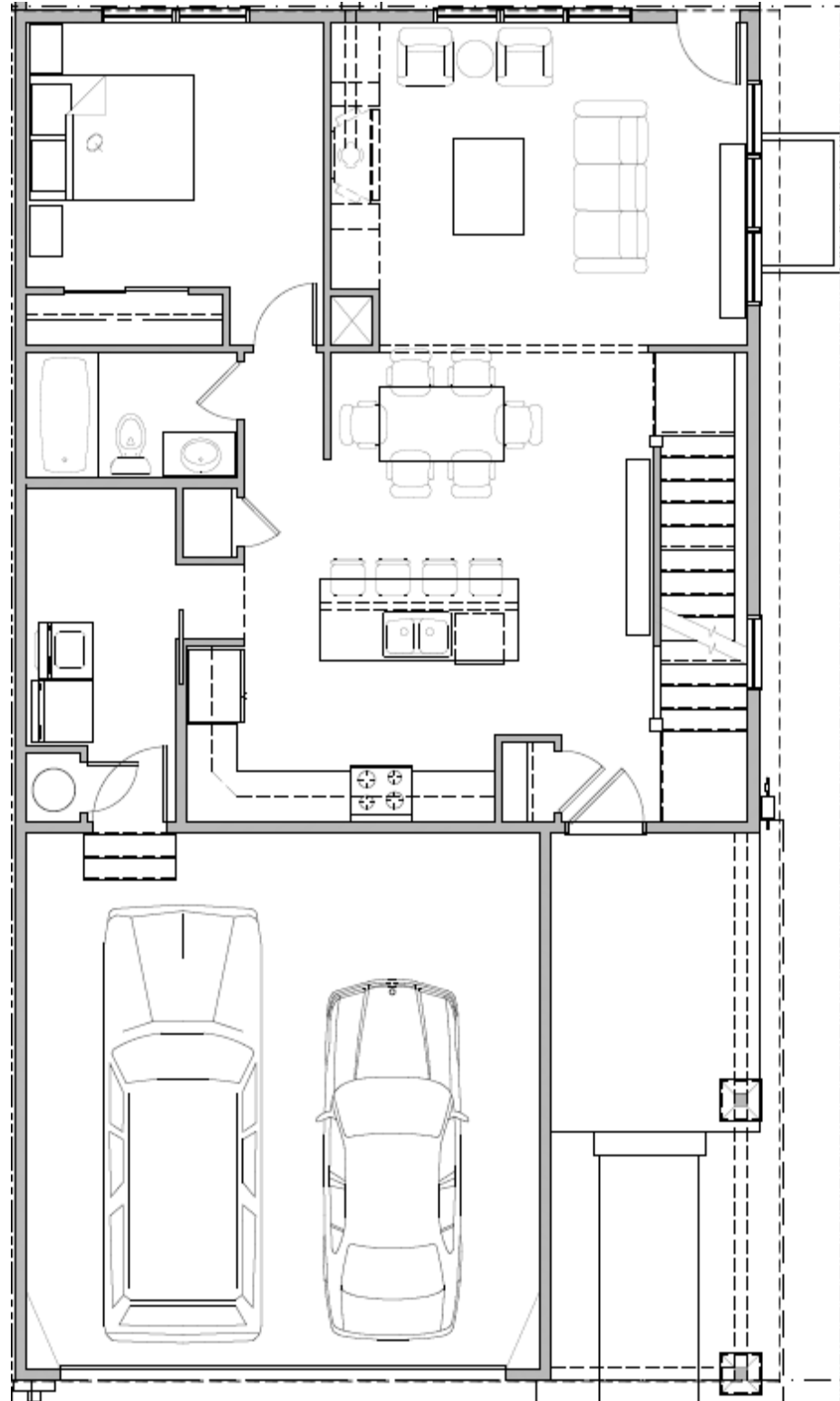
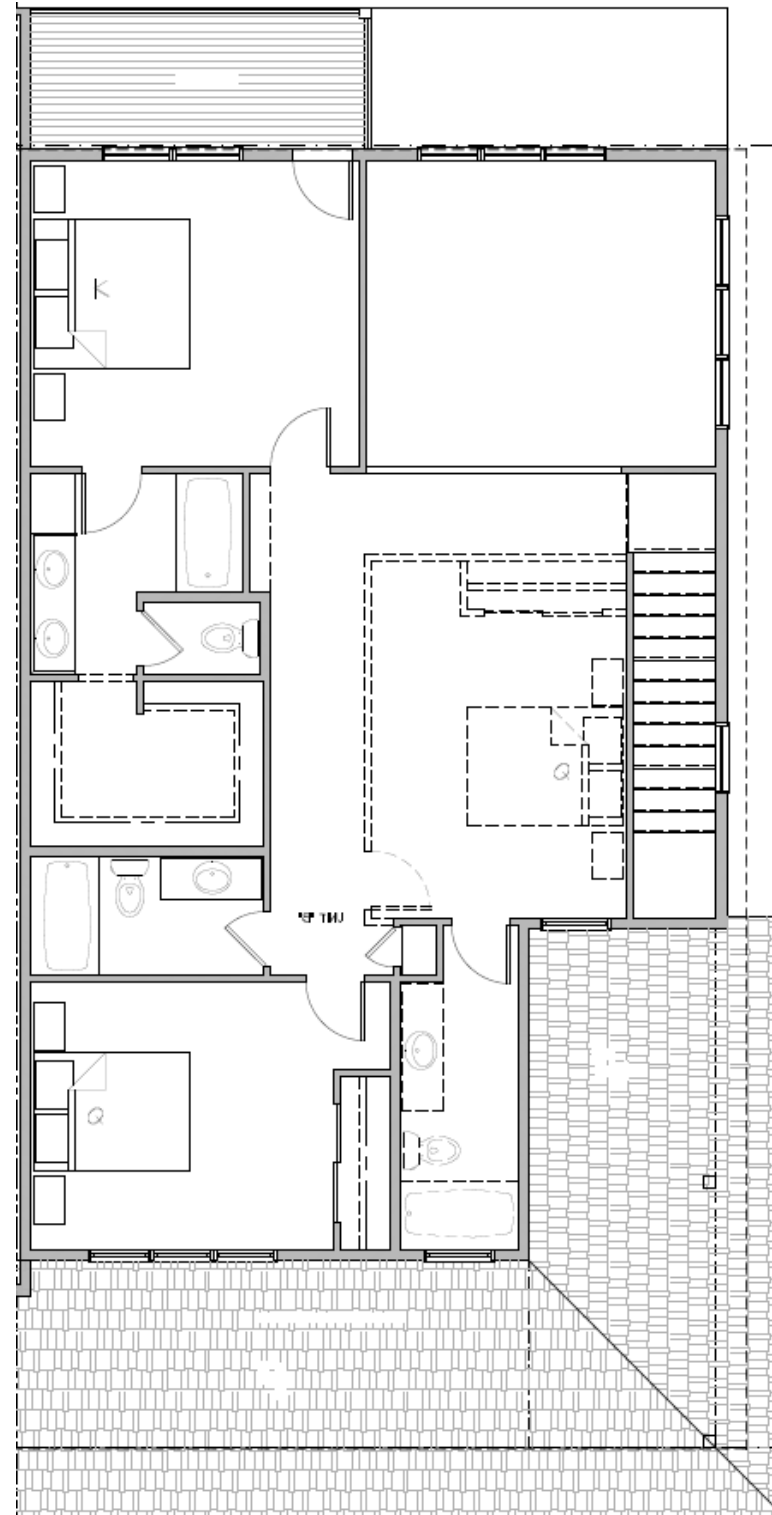


Soleil Homes at Brush Creek - Duplex Floorplan

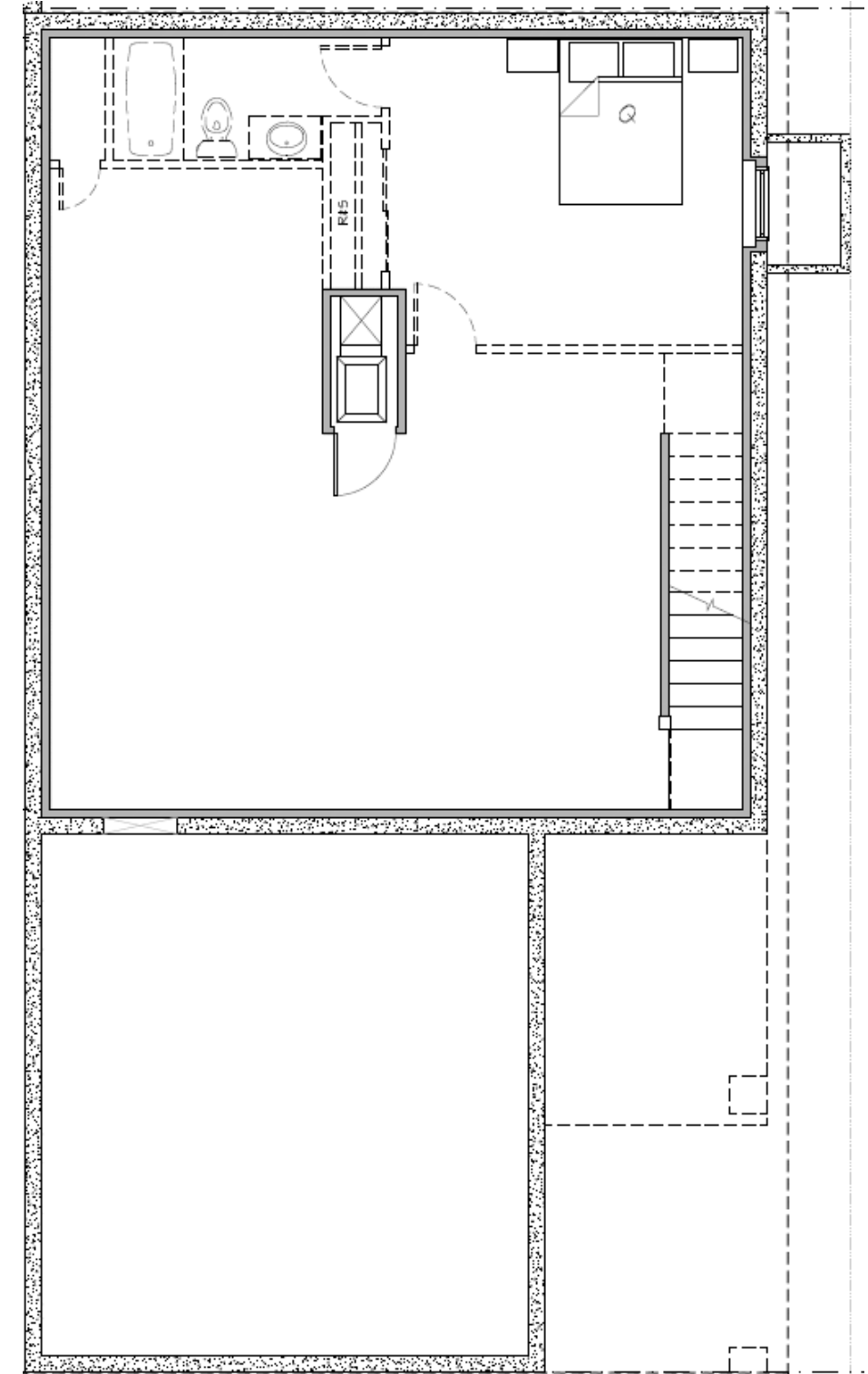
Main Floor



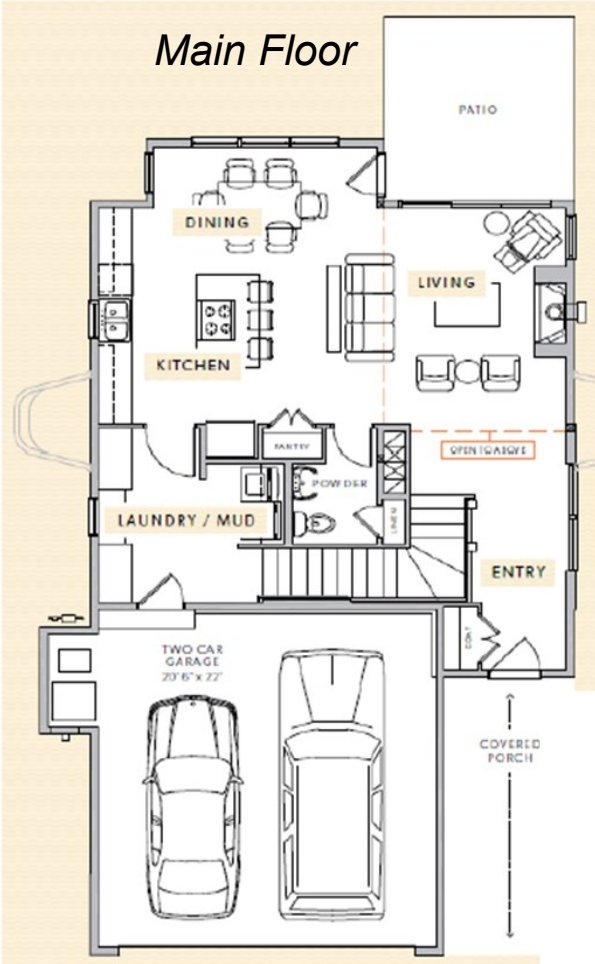
Upper Level



Lower Level



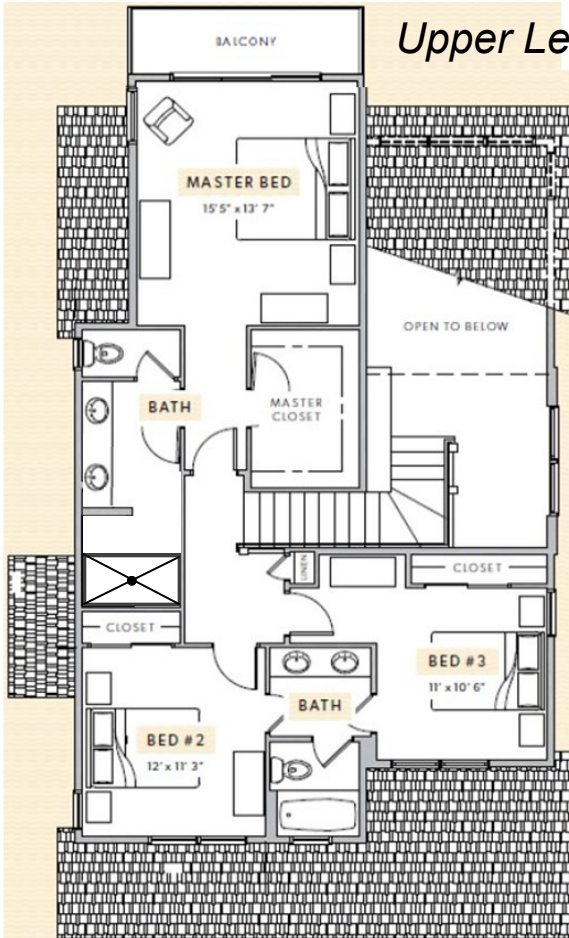
Main Floor



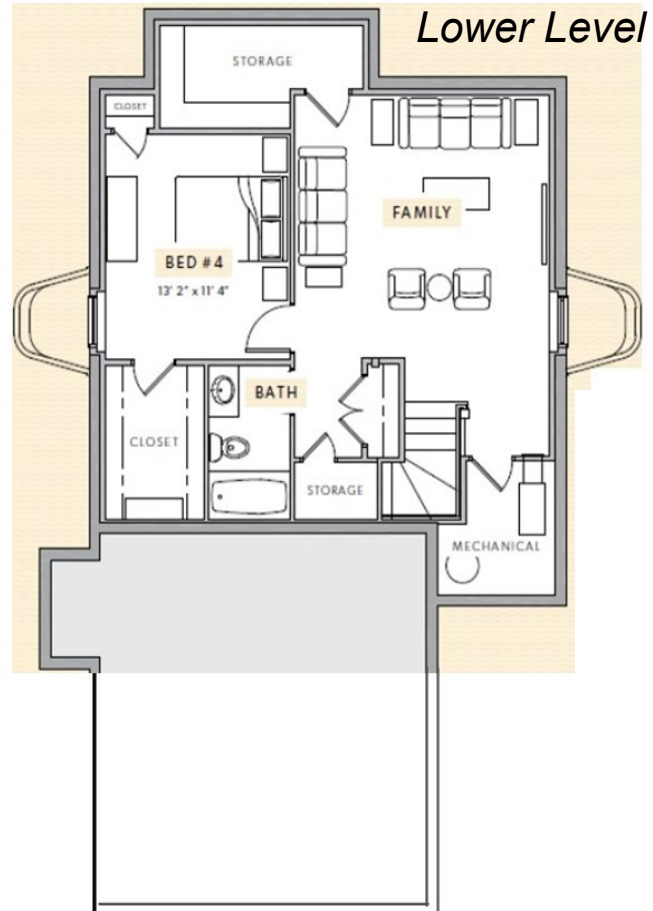
SUNRISE FLOORPLAN

- 4 bedrooms, 3.5 bathrooms
- 2,697 +/- sq.ft.
- Covered porch and entry
- Vaulted ceilings in living room with fireplace
- Open kitchen with pantry and island
- Sliding glass doors leading to large patio
- Four-piece master bath, walk-in master closet
- Large laundry room/mudroom combo

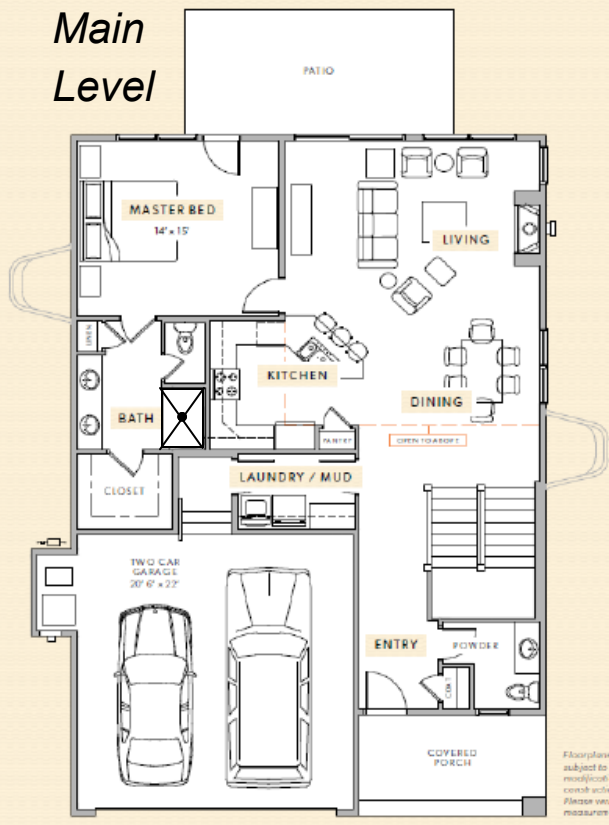
Upper Level



Lower Level



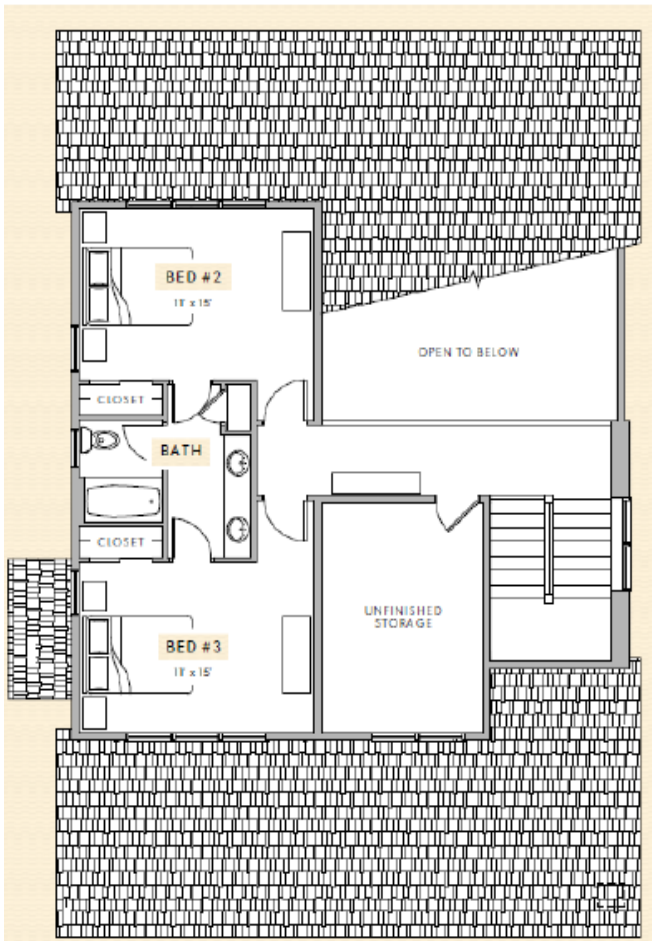
Main Level



HORIZON FLOORPLAN

- 4 bedrooms, 4 bathrooms
- 3,410 +/- sq.ft.
- Covered porch and entry
- Vaulted great room
- Main floor master suite with access to patio and walk-in shower
- Main or lower level laundry option
- Mudroom
- Large loft or study on upper level

Upper Level



Lower Level

